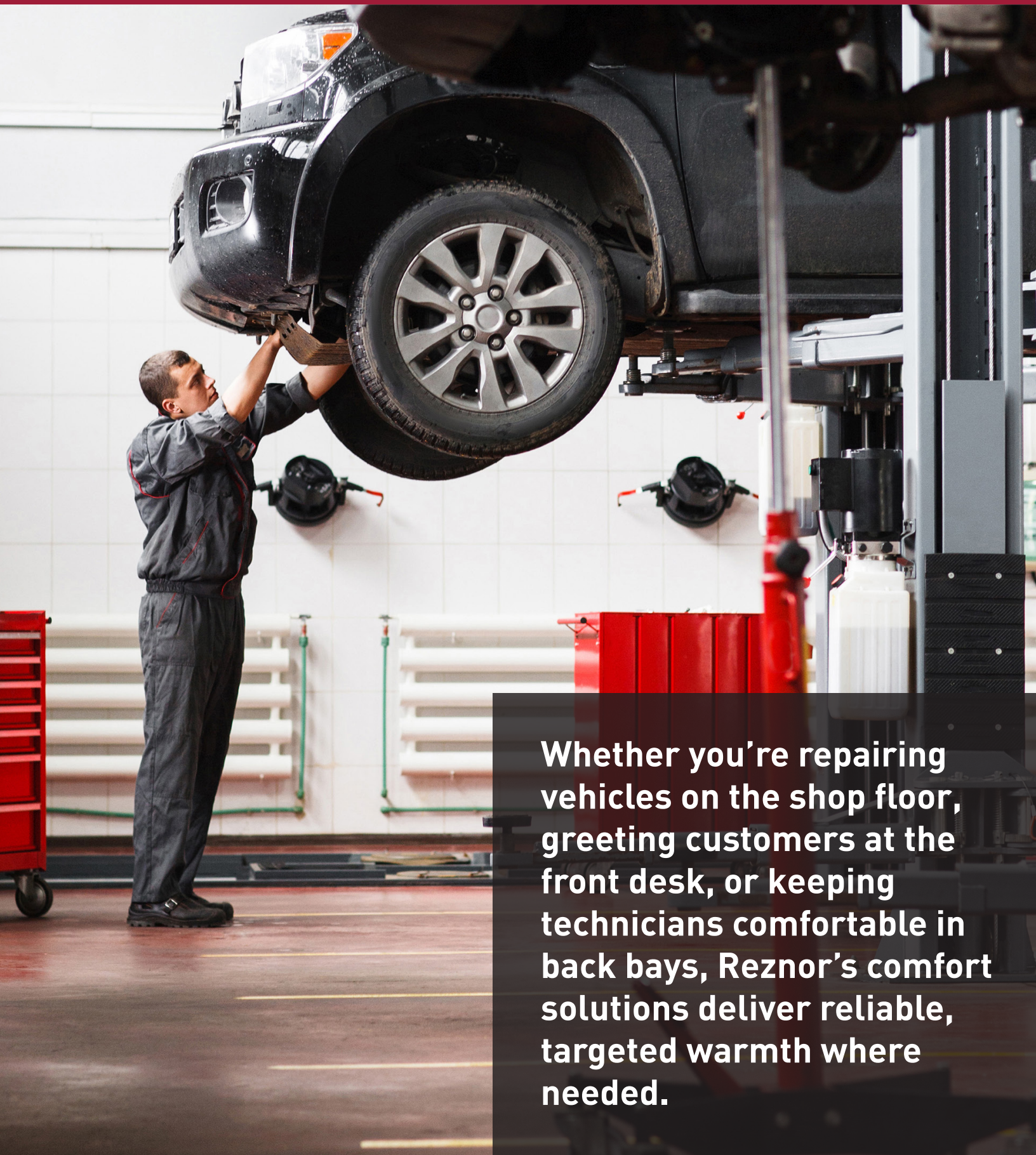
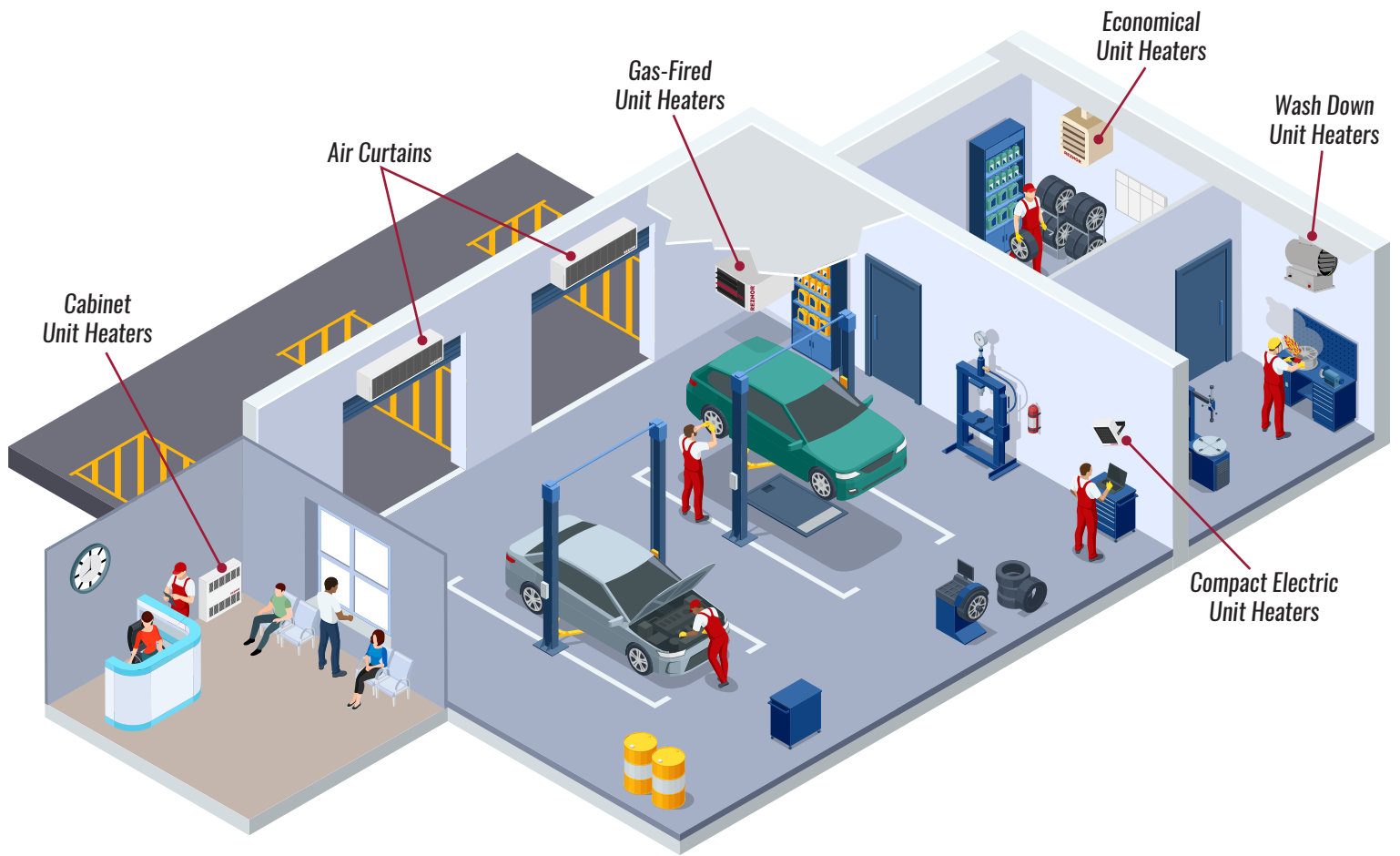


# REZNOR<sup>®</sup>

## Climate Solutions for Auto Shops



Whether you're repairing vehicles on the shop floor, greeting customers at the front desk, or keeping technicians comfortable in back bays, Reznor's comfort solutions deliver reliable, targeted warmth where needed.



	<i>Cabinet Unit Heaters</i>	<i>Air Curtains</i>	<i>Gas-Fired Unit Heaters</i>	<i>Wash Down Unit Heaters</i>	<i>Economic Unit Heaters</i>	<i>Compact Electric Unit Heaters</i>
<i>Shop Area</i>			✓			✓
<i>Storage Space</i>	✓		✓		✓	
<i>Bay Doors</i>		✓				
<i>Lobby/Waiting Room</i>	✓					✓
<i>Grinding/Paint Areas</i>				✓		

## UDXC and UBXC Universal Gas Unit Heaters

Versatile, energy-efficient unit available in multiple heating capacities

- Power-vented low-static axial fan (model UDXC) unit heater
- High-static blower fan (model UBXC) unit heater
- 14 sizes from 30,000 to 400,000 BTUh
- 82 to 83% thermal efficiency
- Natural gas standard (propane conversion kit available)

- Field convertible to separated-combustion
- TCORE2<sup>®</sup> titanium-stabilized aluminized-steel heat exchanger
- Certified for commercial/industrial heating applications (all UBXC sizes and only UDXC sizes 30 to 400)
- Approved for use in residential garages and workshops (only UDXC sizes 30 to 125)

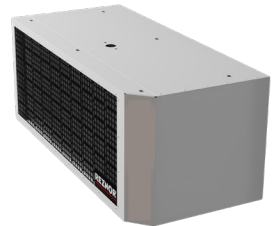


## HAC and HACE Air Curtains

Helps prevent cold or warm air from entering a climate-controlled environment

- Choice of unheated (HAC) or electric heat coils (HACE) models
- 13 sizes (one, two, three, or four doors and door widths from 36 to 168 inches)
- Exclusive positive seal nozzle design
- Double inlet design galvanized forward-curved centrifugal type blower with zinc-plated hubs
- Direct-drive open drip-proof 3/4-HP 1,630-RPM blower motor with integral thermal-overload protection and heavy-duty permanently-lubricated ball bearings

- High-efficiency discharge plenum fills width and height of opening and lowers operational sound level
- For retail, grocery, warehouses, factories, office entryways, vestibule replacement, doors between heated/unheated or cooled/uncooled sections of a building



## EUHC Compact Heater

Flexible, efficient performance • Compact, low-clearance heater • Fan-only mode

- Electric resistive, low-static axial fan unit heater
- 8 sizes (2 to 20 kW)
- Vertical, horizontal mounting, or every 15° in between
- Swiveling allows complex angles to direct heat
- Multi-voltage/phase capable models

- Standard 24V control for low-voltage thermostats
- For indoor shipping docks, garages, power stations, mechanical/maintenance rooms
- ETL certified to UL Standard 2021 and CSA C22.2 #46 for use in the US and Canada



### EGW Economical Heater

Reliable spot heating • Freeze protection • Compact unit for small, commercial spaces

- 3 sizes (heating capacity of 1,500 to 5,000 watts)
- Voltage/phase options: 240/208V/1
- Wall- or ceiling brackets allow 360° rotation
- 20-gauge steel cabinet
- Adjustable louvres control airflow

- High-limit temperature control with automatic reset
- Helical coil nickel-chromium alloy wire heating element
- Almond epoxy/polyester powder paint finish
- For workshops, garages and other small areas requiring heat for comfort or freeze protection



### EWHB Wash Down Heater

For high humidity, wet, washdown areas • Where heating units require flushing with water

- 9 sizes (heating capacity of 3 to 38 kW)
- Voltage/phase options: 208/1, 208/3, 240/1, 240/3, 480/3, and 600/3
- 16-gauge, stainless-steel, moisture and corrosion resistant housing
- Stainless-steel swivel mounting bracket for wall- or ceiling-mounting
- NEMA 4X non-metallic electrical enclosure

- Stainless-steel grille helps prevent accidental contact with fan blade
- Adjustable, stainless-steel outlet louvres
- High-limit temperature control with automatic reset



### EMC Cabinet Wall Heater

Customizable heater with wide range of power ratings, voltage, and control options

- 12 sizes based on heating capacity of 1.3 to 24 kW
- Voltage/phase options: 208/1, 208/3, 240/1, 240/3, 277/1, 347/1, 480/1, 480/3, 600/1, and 600/3
- White or almond epoxy/polyester powder paint finish
- 18-gauge steel cabinet
- Extruded aluminum bar grilles
- Field changeable air inlet and outlet
- Optional fresh air inlet damper and air filters

- Direct-drive, variable-speed fan with fan delay and 240/208V 1/15-HP factory-lubricated motor
- Durable tubular heating element with fins
- Multi-position mounting: surface, semi-recessed, or recessed
- Mounting holes for quick recess-mounting
- High-temperature limit control with automatic reset
- Sub-base and special back plate available
- Standard 240V control circuit



Scan to learn more about our auto shop comfort solutions.



# REZNOR®

Call your REZNOR® Rep at 800.695.1901 to find a product that works for you. Visit [reznorvac.com](http://reznorvac.com) for more information on the REZNOR® product line.