

# REZNOR<sup>®</sup>

## Electric Heating for Restaurants



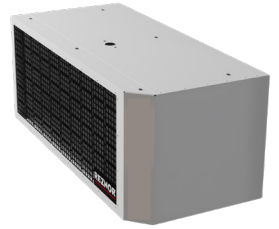
Whether you're running a bustling kitchen, welcoming guests at the front door, or keeping staff comfortable behind the scenes, Reznor's electric heating products deliver targeted warmth where you need it.



## HAC and HACE Air Curtains

Helps prevent cold or warm air from entering a climate-controlled environment

- Choice of unheated (HAC) or electric heat coils (HACE) models
- 13 sizes (one, two, three, or four doors and door widths from 36 to 168 inches)
- Exclusive positive seal nozzle design
- Double inlet design galvanized forward-curved centrifugal type blower with zinc-plated hubs
- Direct-drive open drip-proof 3/4-HP 1,630-RPM blower motor with integral thermal-overload protection and heavy-duty permanently-lubricated ball bearings
- High-efficiency discharge plenum fills width and height of opening and lowers operational sound level
- For retail, grocery, warehouses, factories, office entryways, vestibule replacement, doors between heated/unheated or cooled/uncooled sections of a building



## EHC Commercial Wall Heater

Quick heat for drafty, commercial spaces

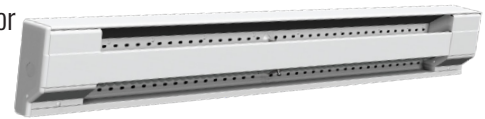
- 8 sizes based on heating capacity of 1.5 to 12 kW
- Voltage/phase options: 120/1, 208/1, 208/3, 240/1, 240/3, 277/1, 347/1, 480/1, 480/3, 600/1, and 600V/3
- White or almond epoxy/polyester powder paint finish
- 18-gauge steel front cover
- Durable tubular heating element with fins
- Bottom air outlet
- High-temperature limit control with automatic reset
- Factory-lubricated closed fan motor
- Durable tubular heating element with fins
- Thermostat with control knob
- Up to three units may be mounted side-by-side



## EBHB Heavy-Duty Baseboard Heater

Compact, durable, powerful heater engineered for high performance

- 10 sizes based on heating capacity of 0.3 to 2.5 kW
- Voltage/phase options: 120/1, 208/1 and 240/1
- White semi-gloss epoxy/polyester powder coat paint finish
- Residential capable
- Robust 22-gauge body with rounded upper corners
- Sturdy 20-gauge front panel with design embossed lines and connection box at both ends
- Welded 20-gauge junction box to back wrap, easy rear access wiring panel
- Small height and slim depth for economy of space
- Easy installation directly on floor (no disassembly required)
- Quietly-operating factory-lubricated fan motor
- Raceway and side knock-outs for baseboard interconnections
- Stainless-steel tubular heating element
- High-temperature limit control with automatic reset
- Aluminum diamond-shaped heating element fins positioned for maximized heat transfer



## H-Series Forced-Air Destratification Fan

Distributes existing space heat to occupant level

- 4 sizes based on maximum mounting height of 25 to 60 feet
- Reduces heat load and improves building energy efficiency
- Optimizes building efficiency when integrated with unit heater controls
- Provides cooling air movement during warm weather
- Directs air with hanging brackets and integrated louvers
- Energy-saving axial fan motor
- Close mesh fan guard
- External terminal strip for quick connection
- For installations with narrow aisles, spaces with lighting or hanging signage, and smaller spaces



## **EUH Heater** Efficient option for wide range of commercial and industrial applications

- Electric resistive, low-static axial fan heater
- 8 sizes (3 to 30 kW)
- Multi-voltage/phase capable models
- Multiple mounting options
- High-temperature limit control with automatic reset and air-proving switch protection
- For indoor entryways, stairwells, hallways; also for heat/freeze protection
- ETL certified to UL Standard 2021, Fixed and Location-Dedicated Electric Room Heaters



## **EWHB Wash Down Heater** For high humidity, wet, washdown areas • Where heating units require flushing with water

- 9 sizes (heating capacity of 3 to 38 kW)
- Voltage/phase options: 208/1, 208/3, 240/1, 240/3, 480/3, and 600/3
- 16-gauge, stainless-steel, moisture and corrosion resistant housing
- Stainless-steel swivel mounting bracket for wall- or ceiling-mounting
- NEMA 4X non-metallic electrical enclosure
- Stainless-steel grille helps prevent accidental contact with fan blade
- Adjustable, stainless-steel outlet louvers
- High-limit temperature control with automatic reset



## **EMC Cabinet Wall Heater** Customizable heater with wide range of power ratings, voltage, and control options

- 12 sizes based on heating capacity of 1.3 to 24 kW
- Voltage/phase options: 208/1, 208/3, 240/1, 240/3, 277/1, 347/1, 480/1, 480/3, 600/1, and 600/3
- White or almond epoxy/polyester powder paint finish
- 18-gauge steel cabinet
- Extruded aluminum bar grilles
- Field changeable air inlet and outlet
- Optional fresh air inlet damper and air filters
- Direct-drive, variable-speed fan with fan delay and 240/208V 1/15-HP factory-lubricated motor
- Durable tubular heating element with fins
- Multi-position mounting: surface, semi-recessed, or recessed
- Mounting holes for quick recess-mounting
- High-temperature limit control with automatic reset
- Sub-base and special back plate available
- Standard 240V control circuit



## **RIEH High Intensity Outdoor Heaters**

### Engineered to keep outdoor spaces operational year-round

- 3 sizes (heating capacity of 1,500; 3,000; 6,000 watts, derated capacities available)
- Overall lengths (in): 27, 39, 42
- Voltage options: 120V, 240V-208V, 277V
- Long lasting carbon fiber heating element
- Powder coated, aircraft grade aluminum housing
- IP65 weather resistant rating protects against harsh outdoor conditions
- Up to 8,000 hours emitter life
- Auto off after 8 hours
- For design-forward commercial, industrial, and residential spaces like restaurants, hotels, patios, warehouses, manufacturing areas, and auto service centers



Scan to learn more about our restaurant comfort solutions.



Call your REZNOR® Rep at 800.695.1901 to find a product that works for you.  
Visit [reznorvac.com](http://reznorvac.com) for more information on the REZNOR® product line.

# REZNOR®