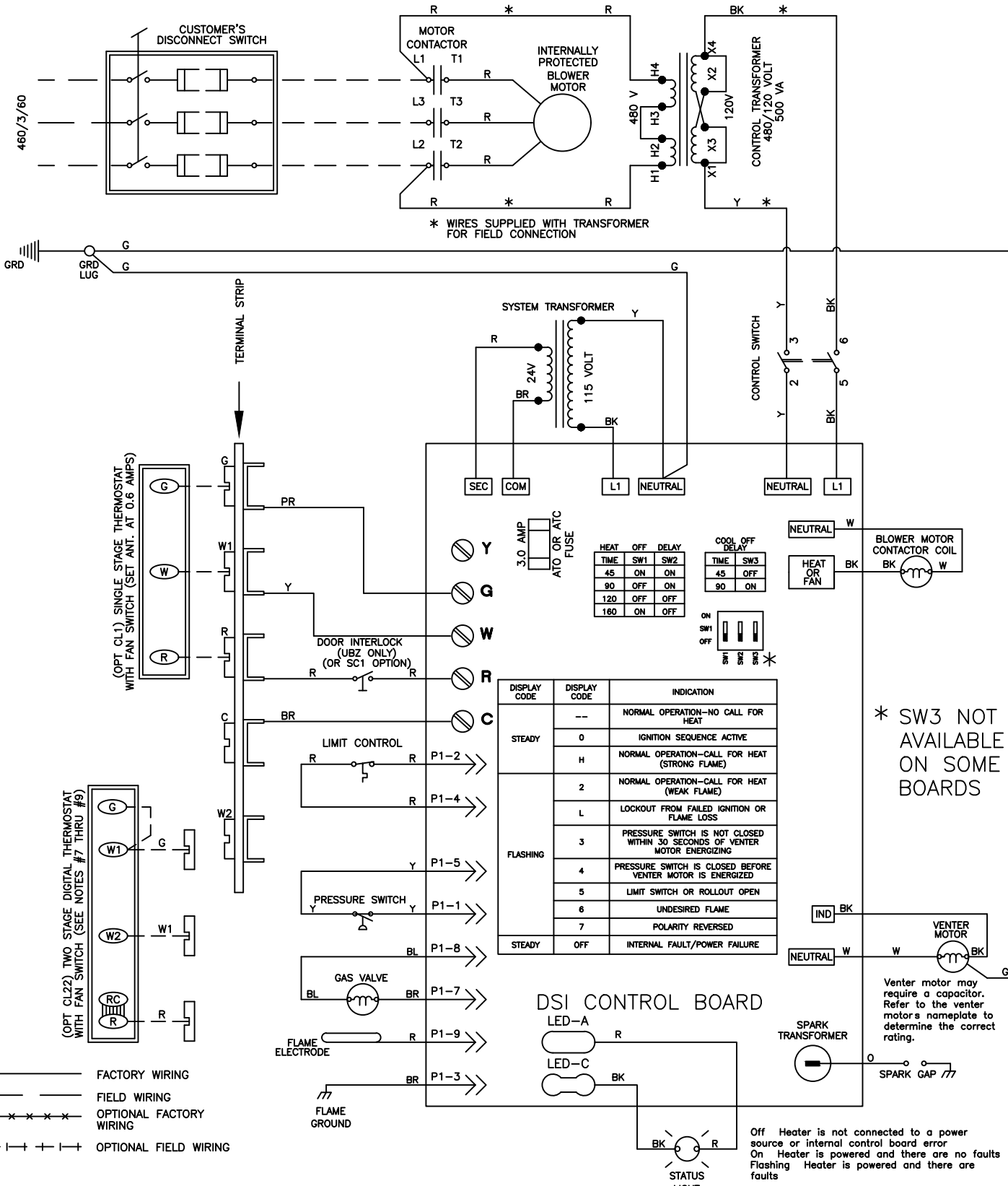


MODEL UBXC



- OPERATING SEQUENCE**
1. SET THERMOSTAT AT LOWEST SETTING, (FAN SWITCH AT "AUTO" POSITION).
 2. TURN ON MANUAL GAS VALVE.
 3. TURN ON POWER TO UNIT.
 4. SET THERMOSTAT AT DESIRED SETTING.
 5. LOW STAGE OF THERMOSTAT ENERGIZES THE BLOWER MOTOR FOR AIR RE-CIRCULATION.
 6. THERMOSTAT CALLS FOR HEAT, ENERGIZING THE VENTER MOTOR.
 7. VENTER PRESSURE SWITCH CLOSES, FIRING UNIT AT FULL RATE.
 8. BURNER FLAME IS SENSED, AND IN 30 SECONDS THE BLOWER MOTOR IS ENERGIZED.
 9. IF THE FLAME IS EXTINGUISHED DURING MAIN BURNER OPERATION, THE INTEGRATED CONTROL SYSTEM CLOSES THE MAIN VALVE AND MUST BE RESET BY INTERRUPTING POWER TO THE CONTROL CIRCUIT (SEE LIGHTING INSTRUCTIONS).
 10. SET FAN SWITCH AT "ON" POSITION FOR CONTINUOUS BLOWER OPERATION.

DISPLAY CODE	DISPLAY CODE	INDICATION
STEADY	--	NORMAL OPERATION—NO CALL FOR HEAT
	0	IGNITION SEQUENCE ACTIVE
	H	NORMAL OPERATION—CALL FOR HEAT (STRONG FLAME)
FLASHING	2	NORMAL OPERATION—CALL FOR HEAT (WEAK FLAME)
	L	LOCKOUT FROM FAILED IGNITION OR FLAME LOSS
	3	PRESSURE SWITCH IS NOT CLOSED WITHIN 30 SECONDS OF VENTER MOTOR ENERGIZING
	4	PRESSURE SWITCH IS CLOSED BEFORE VENTER MOTOR IS ENERGIZED
	5	LIMIT SWITCH OR ROLLOUT OPEN
	6	UNDESIRED FLAME
	7	POLARITY REVERSED
STEADY	OFF	INTERNAL FAULT/POWER FAILURE

* SW3 NOT AVAILABLE ON SOME BOARDS

Venter motor may require a capacitor. Refer to the venter motor's nameplate to determine the correct rating.

Off Heater is not connected to a power source or internal control board error
 On Heater is powered and there are no faults
 Flashing Heater is powered and there are faults

TOTAL WIRE LENGTH	FIELD CONTROL WIRING DISTANCE FROM UNIT TO CONTROL	MIN. RECOMMENDED WIRE GAUGE
150'	75'	#18 GA. WIRE
250'	125'	#16 GA. WIRE
350'	175'	#14 GA. WIRE

WIRING CODE
 BLACK - BK
 BROWN - BR
 RED - R
 ORANGE - O
 YELLOW - Y
 GREEN - G
 BLUE - BL
 PURPLE - PR
 WHITE - W

- NOTES**
1. THE FOLLOWING CONTROLS ARE FIELD INSTALLED OPTIONS: THERMOSTAT AND CONTROL TRANSFORMER
 2. DOTTED WIRING INSTALLED BY OTHERS.
 3. CAUTION: IF ANY OF THE ORIGINAL WIRING AS SUPPLIED WITH THE APPLIANCE MUST BE REPLACED, IT MUST BE REPLACED WITH WIRING MATERIAL HAVING A TEMPERATURE RATING OF AT LEAST 105° C. EXCEPT FOR SENSOR LEAD WIRE AND LIMIT WIRING WHICH MUST BE 150° C.
 4. USE 18 GA. WIRE FOR ALL WIRING ON THE UNIT.
 5. LINE AND FAN MOTOR BRANCH WIRE SIZES SHOULD BE OF A SIZE TO PREVENT VOLTAGE DROPS BEYOND 5% OF SUPPLY LINE VOLTAGE.
 6. VERIFY JUMPER ON CL22 THERMOSTAT TERMINALS R TO RC.
 7. FAN SWITCH OR LOW STAGE OF CL22 THERMOSTAT ENERGIZES THE BLOWER MOTOR.
 8. HIGH STAGE OF CL22 THERMOSTAT INITIATES A CALL FOR HEAT.
 9. WHEN PROVIDING OR REPLACING FUSES IN THE FUSIBLE DISCONNECT SWITCH USE DUAL ELEMENTS TIME DELAY FUSES AND SIZE ACCORDING TO 1.25 TIMES THE MAXIMUM TOTAL INPUT AMPS.
 10. DISCONNECT SWITCH IS FIELD FURNISHED OR AVAILABLE FROM FACTORY AS AN OPTION.