

Electric Plenum-Rated Unit Heaters EPH for Commercial & Industrial Suspended or Concealed Ceiling Spaces

REZNOR®



For Indoor Spaces

- | | | |
|-------------------------|--------------|-----------------------|
| • Commercial Vestibules | • Warehouses | • Underground Parking |
| • Offices | • Stairwells | • Crawl Spaces |



Engineered for Efficiency and Safety in Suspended or Concealed Spaces

Why Choose Reznor EPH?

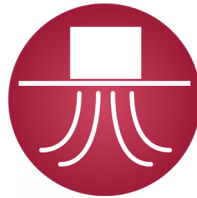
The Reznor® Electric Plenum-Rated Unit Heater (EPH) is designed for maximum flexibility, efficiency, and safety in suspended or concealed ceiling spaces.

EPH Differentiators



Powerful Heat, Hidden Comfort

Featuring built-in multi-voltage controls and zero-clearance installation, the EPH delivers dependable heating where aesthetics and space matter most. Also, two-stage heat with two-stage thermostat is available for 10kW to 15kW models.



Ceiling-Plenum Versatility

Heat the space between structural and suspended ceilings or integrate into a ducted system, horizontally or vertically.



Advanced Controls

Factory-installed circuits, disconnects, and optional built-in or two-stage thermostats (size dependant) for easy integration.



Zero-Clearance Rated

Installation in tight plenum areas without compromising building integrity.



Robust Construction

Heavy-gauge steel housing, optional adjustable airflow louvers, fan delay control, and multiple power/phase options (208-600 V).

Learn more at
www.reznorhvac.com/products/eph-plenum-rated-unit-heaters

REZNOR®

Technical Specifications EPH

HEAT WHERE YOU NEED IT, HIDDEN ABOVE.

EPH Features

Color

- Standard: aluminum

Finish

- Standard: aluminum epoxy/polyester powder paint

Voltage

- 208/1, 208/3, 240/1, 240/3, 277/1, 347/1, 480/1, 480/3, 600/1, 600/3

Construction

- 18- and 20-gauge steel
- Optional adjustable louver for air flow direction available
- Optional pleated and washable filters
- Automatic reset and manual reset high-limit temperature control
- One contactor per high-limit temperature control, on independent circuit

Fan

- Direct drive, selectable speed squirrel-cage fan
- Fan delay

Motor

- Totally enclosed standard factory-lubricated motor
- Thermally protected motor mounted in cold compartment
- Optional constant torque motor (ECM) for greater efficiency

Heating Element

- Three tubular heating elements with fins (for 3.1kW-5kW-7.5kW models)
- Six tubular heating elements with fins (for 10kW-12kW-15kW models)

Control

- Factory installed 24V control circuit with transformer
- Factory-installed disconnect switch
- Optional built-in thermostat available
- Optional two-stage thermostat (size dependant for 10kW-12kW-15kW models)

Reznor highly recommends using a wall thermostat for greater comfort. Any remote thermostat or relay must be connected to the heater control terminal block.

Installation

- Horizontal mounting with free air discharge or ducted installation
- Vertical mounting in the upwards air flow position with ducted installation only (3.1kW and 5kW models only)
- 80°F (27°C) maximum operating ambient temperature
- Zero clearance approved when installed in concealed space

Warranty

- One (1)-year warranty against defects

Application

- This heater is designed to be used in the space between a structural ceiling and a suspended ceiling, plenum space, or plenum.



REZNOR®

EPH Models

	Unit of Measurement	3	5	7	10	12	15	
Heating Capacity	Watt	3100	5000	7500	10,000	12,000	15,000	
	BTUh	10,578	17,060	25,591	34,121	40,945	51,182	
Temperature Rise ²	°F	22	37	25	32	40	49	
	°C	12	21	14	18	22	27	
Airflow, Low Speed	CFM minimum ¹	430			1100			
Airflow, High Speed		460			1200			
Fan Motor	HP	1/3						
	RPM	1075						
Voltage/Phase	N/A	208-240/1-3, 277-1, 347-1, 480-600/1-3			208/3, 240/1-3, 277/1, 347/1, 480-600/1-3	208-240/3, 347/1, 480-600/1-3	208-240/3, 480-600/1-3	
Weight	lbs	65 (208-277)		100			100 (208-277)	
		77 (347-600)					112 (480-600)	

¹ Tested at 0.2" water column (static pressure).
² Tested at low speed.

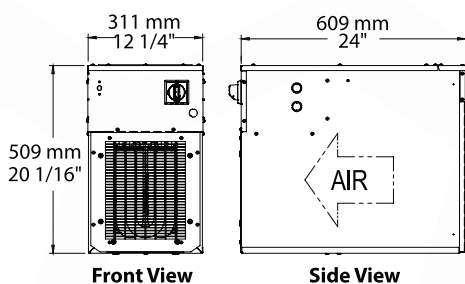
Options

Option Code	Description
IC15	Internal One-Stage Tamper-Proof Thermostat
IC14	Internal Two-Stage Tamper-Proof Thermostat for 10-15kW models
VFD1	Constant Torque Motor (ECM)
HZ3	Standard Pleated Air Filter
HZ4	Washable Air Filter
HL10	Horizontal or Vertical Install Louver Kit

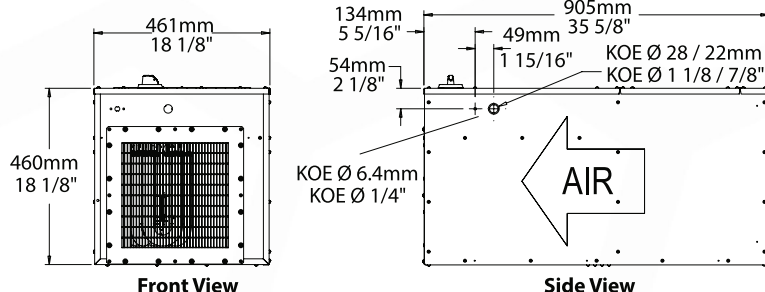


Dimensions

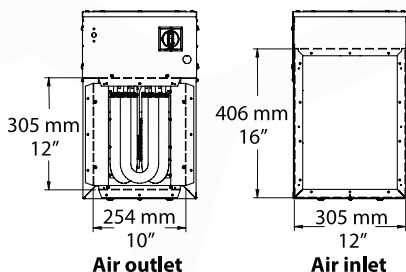
3.1kW and 5kW models



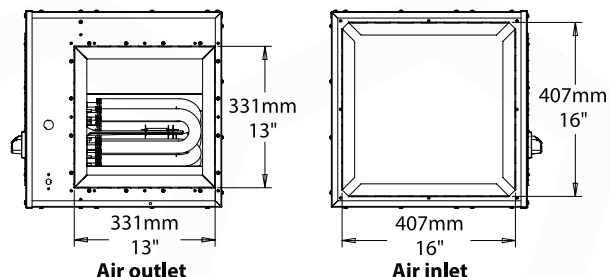
7.5kW to 15kW models



Dimensions for ductwork



Dimensions for ductwork



Call your Reznor® Rep at 800.695.1901 or visit www.reznorhvac.com/rep-locator.
 Visit reznorhvac.com for more information on the Reznor® product line.

REZNOR®